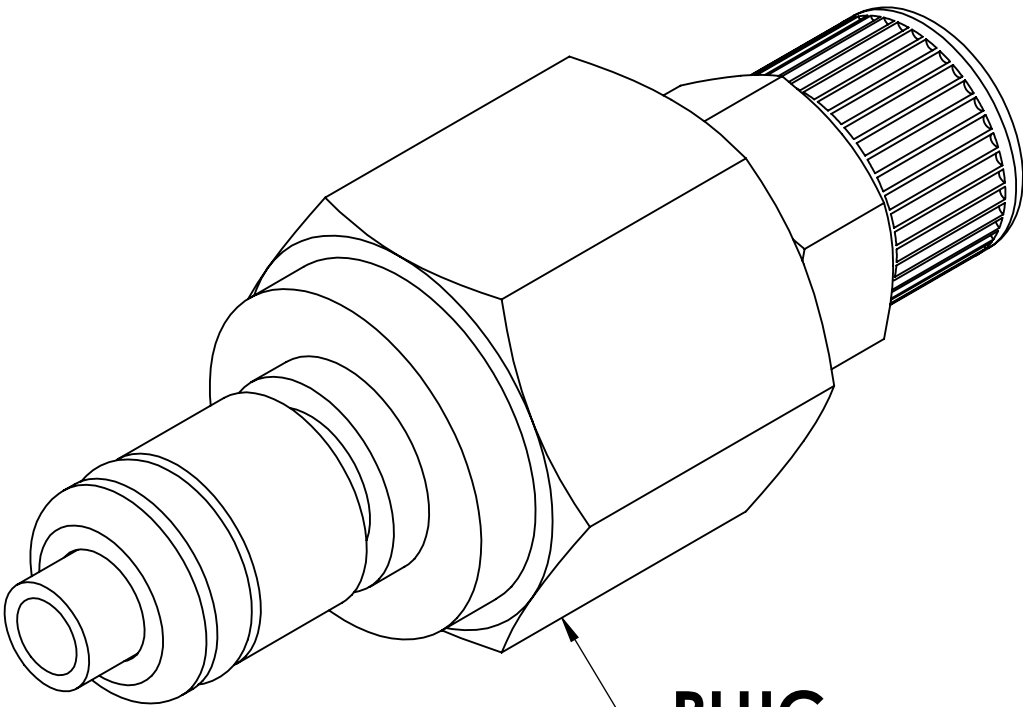
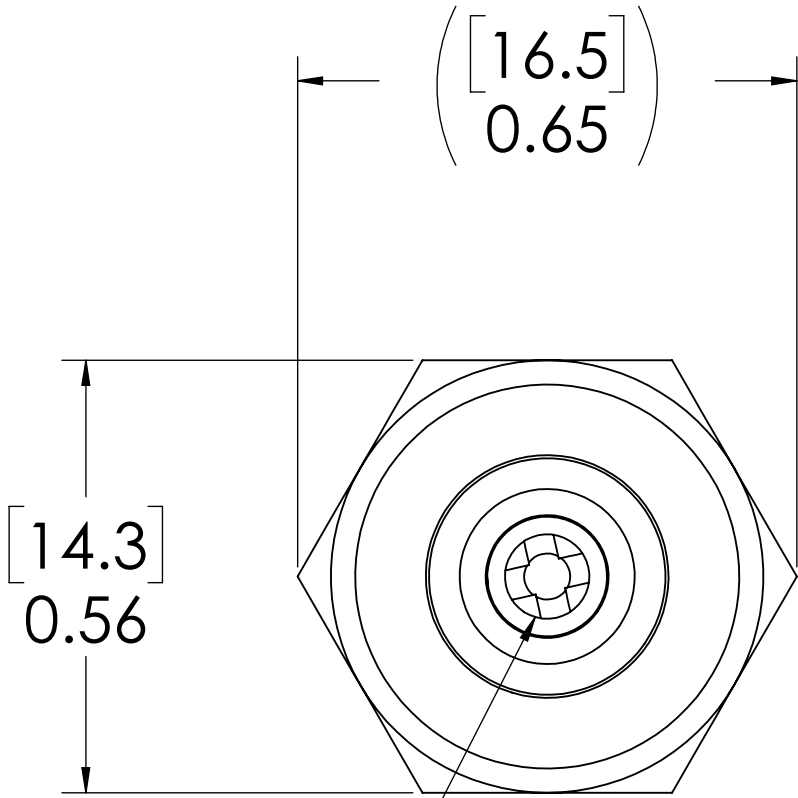


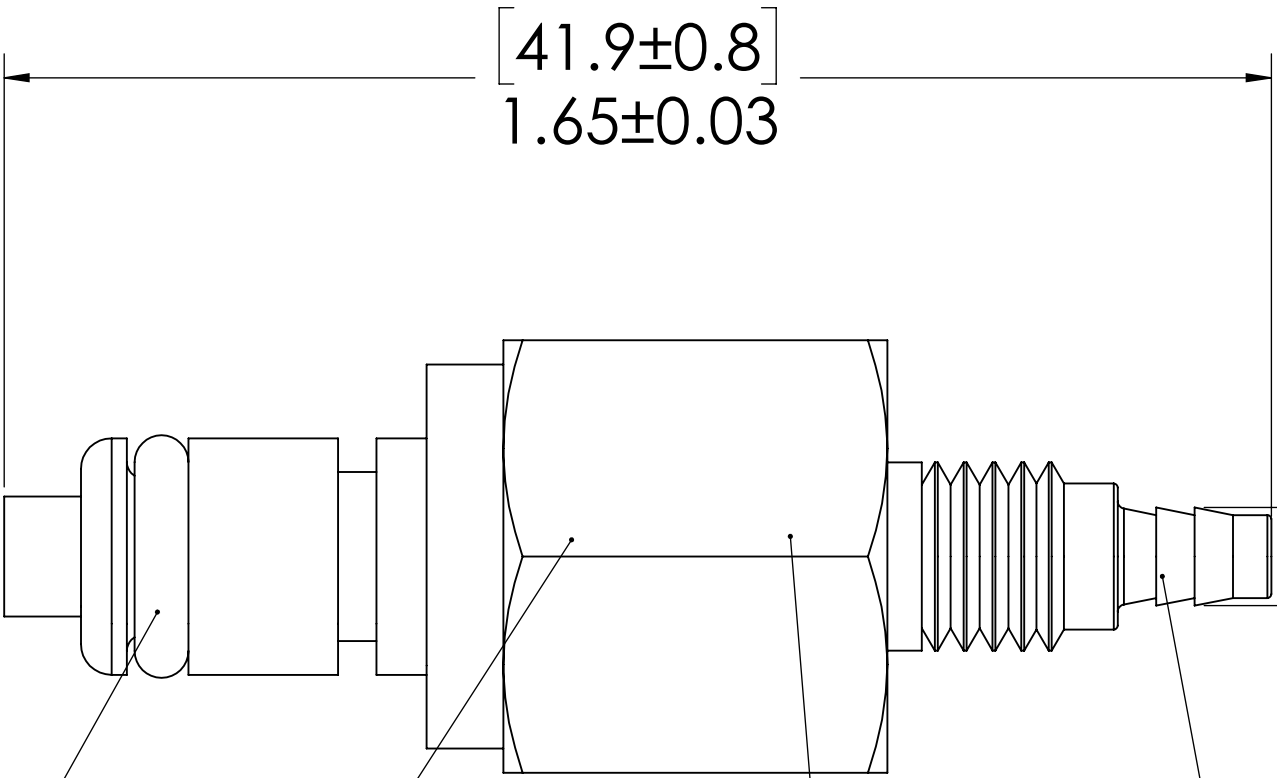
REVISIONS						
SHEET	ZONE	REV.	ECO	DESCRIPTION	DATE	APPROVED
1	ALL	A	50253	INITIAL RELEASE	3/29/2019	HRC



**PLUG,
(BRASS, NICKEL AND
CHROME PLATED)**



**VALVE,
(ACETAL)**



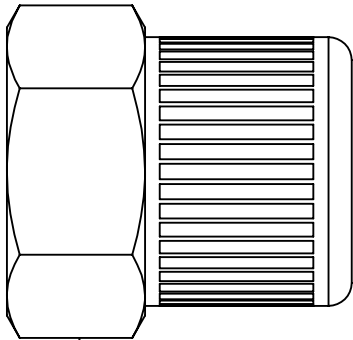
**O-RING,
(BUNA-N)**

**VALVE O-RING,
INTERNAL
(BUNA-N)**

**VALVE SPRING,
INTERNAL
(STAINLESS STEEL)**

3.3
Ø 0.13

5/32" TUBE OD




**PTF NUT,
(BRASS, NICKEL PLATED)
(PACKAGED SEPERATELY)**

NOTES:

1. MATERIAL: BRASS
2. FINISH: CHROME
3. O-RING MATERIAL: BUNA-N
4. O-RINGS LUBRICATED WITH FOOD GRADE SILICONE OIL, 350 CST.

FOR REFERENCE ONLY

UNLESS OTHERWISE SPECIFIED:		NAME	DATE	 PART NO: 20CBV-PB9-025		
DIMENSIONS ARE IN INCHES TOLERANCES: FRACTIONAL ±1/32 ANGULAR: MACH ±0.5 BEND ±2 ONE PLACE DECIMAL ±0.1 TWO PLACE DECIMAL ±0.01 THREE PLACE DECIMAL ±0.005 TWO PLACE DECIMAL (mm) ±0.12		DRAWN	DHJ	12/01/09	DESCRIPTION: LinkTech 20CB Series Straight Male, Valved, 5/32" PTF, Chrome Brass	
		CHECKED	DHJ	12/01/09		
		ENG APPR.	HRC	3/29/19		
		MFG APPR.	BDB	3/29/19		
PROPRIETARY AND CONFIDENTIAL		PRODUCTION	LS	3/29/19	SIZE DWG. NO. REV C 20CB200065 A	
THE INFORMATION CONTAINED IN THIS DRAWING IS THE SOLE PROPERTY OF LINKTECH LLC. ANY REPRODUCTION OR DISCLOSURE IN PART OR AS A WHOLE WITHOUT THE WRITTEN PERMISSION OF LINKTECH LLC IS STRICTLY PROHIBITED.		COMMENTS:				
				SCALE: NTS	WEIGHT:	SHEET 1 OF 1